

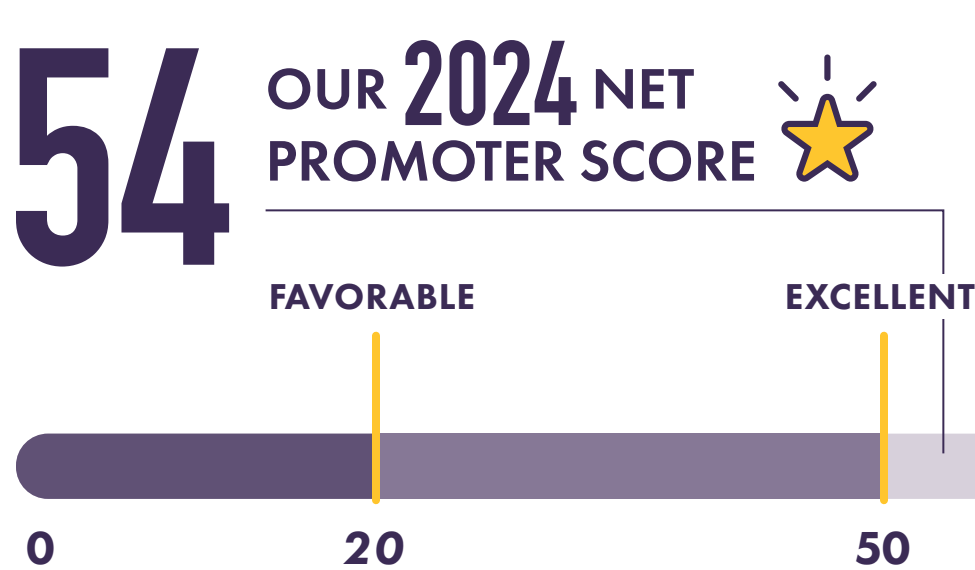


2024 PARENT SATISFACTION SURVEY RESULTS



WHAT IS A NET PROMOTER SCORE?

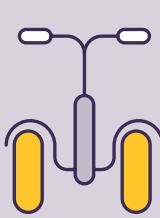
A net promoter score is a rating that shows how likely an organization's customers will recommend their service.



WHAT'S IN A SCORE? Industry standard says a score of 20 is "Favorable," 50 is "Excellent" and 80 is "World Class"

“The level of care for students is **PHENOMENAL**. The balance of compassion and grace with the discipline and structure is **TOP NOTCH**. **THANK YOU FOR TEACHING AND CARING** for our kids everyday.”

PRESCHOOL PARENT SATISFACTION



My child is learning about Jesus and is given opportunities to grow closer to Him	96%
My child is challenged to reach his/her potential academically	91%
My child's social and emotional needs are being met	92%
It is easy to support and get involved in the Dayton Christian Preschool community	90%



GRADES K-5 PARENT SATISFACTION



My child is learning about Jesus and is given opportunities to grow closer to Him	99%
My child is challenged to reach his/her potential academically	89%
My child's social and emotional needs are being met	91%
It is easy to support and get involved in the Dayton Christian Elementary community	87%



GRADES 6-12 PARENT SATISFACTION



Academic preparation	86%
Spiritual life development	94%
Community life opportunities	85%
Athletic and fine arts opportunities	88%



TOP PRAISE FROM OUR PARENTS

- Biblical integration and Christian worldview
- Caring faculty
- Quality academics
- Opportunities for my student
- Community and environment

TOP CONCERNS FROM OUR PARENTS



- Teacher quality
- Value and quality of food service
- Enrollment growth placing class size at risk
- Need for new facilities
- Spiritual development

“Dedication and **TEACHER'S LOVE** toward my children. I know I can't shield them from everything in the world, but I feel they are developing **THEIR SHIELD OF GOD THROUGH DC**.”

FACULTY AND LEADERSHIP SATISFACTION



FACULTY	BOARD LEADERSHIP	ADMINISTRATIVE LEADERSHIP
92%	70%	90%

PARENTS BELIEVE THAT DAYTON CHRISTIAN SCHOOL



Offers quality food service	49%
Develops leadership in students	84%
Maintains a commitment to excellence	90%
Develops character and values in students	92%
Integrates a Christian worldview into instruction	96%
Creates a safe and secure environment for students	85%
Provides a caring and nurturing environment for my child	94%
Maintains a diverse representation of race and ethnicity among students	76%



“Cultivating a **GREAT ENVIRONMENT** for **STRONG ACADEMIC** and **SPIRITUAL GROWTH** in our students.”